

# ETITEC C T2 275/20 4+0



## Specifications

ETI Code	002440395
Description	ETITEC C T2 275/20 4+0
Weight	.456
Level	Home and residential building protection
Type	C
No. Of poles	4
Usage (IEC/VDE)	II,C
Max. Discharge current I <sub>max</sub> , 8/20 (kA)	40
U <sub>c</sub> Continuous Operating Voltage (V)	275
Remote signalisation	NO
Network system	IT 3 phase, TNS 3 phase
Catalogue Group	Etitec C T2
Installation	Home and residential building protection

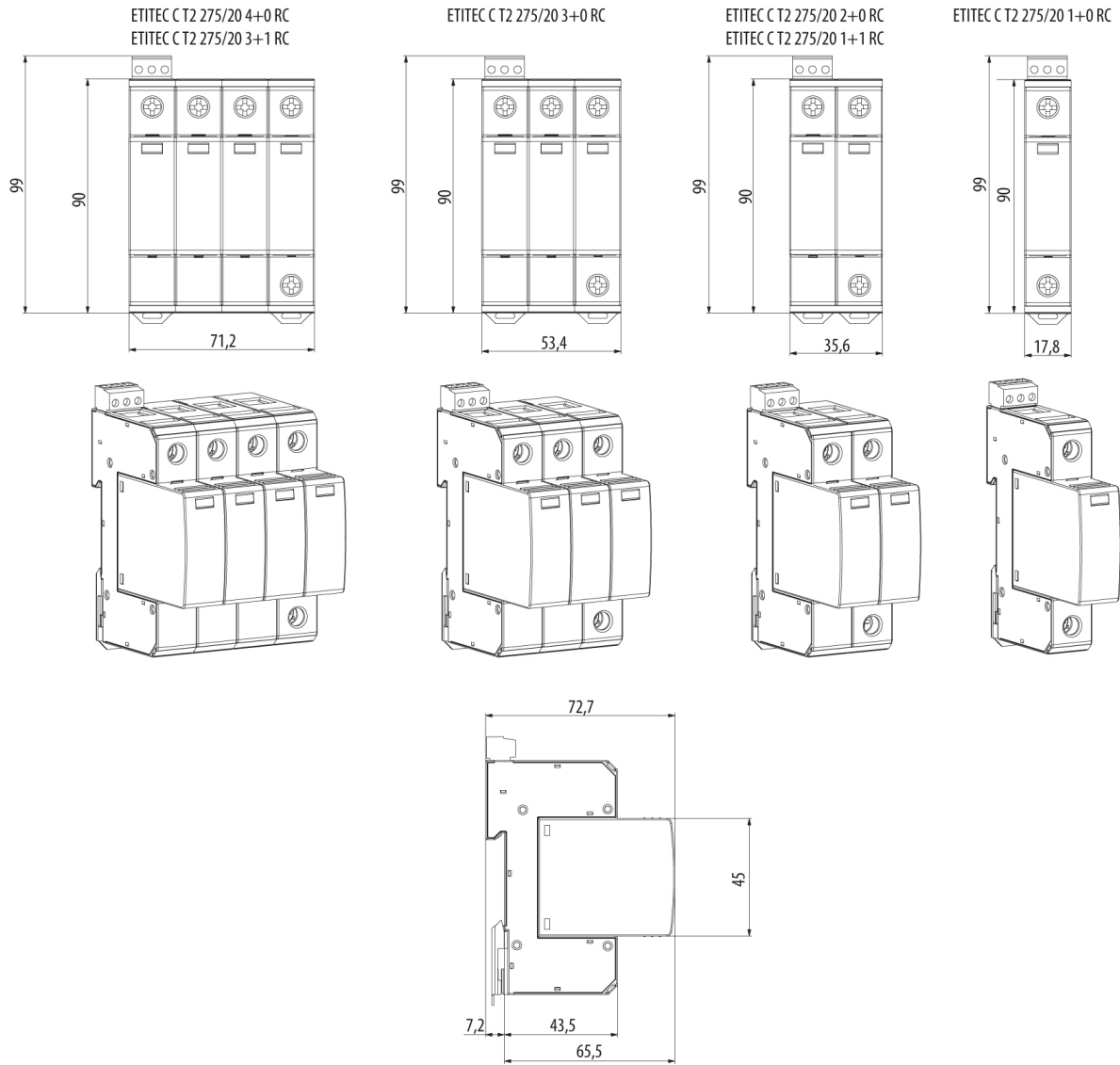
Online product page

## Other documentation

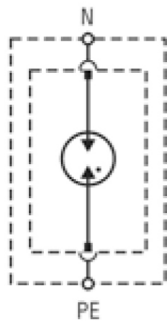


[Instruction manual](#)  
[CE declaration](#)  
[Technical data catalogue](#)

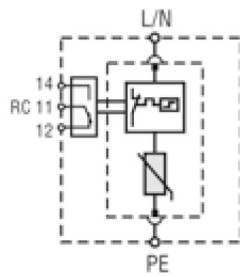
# Dimension drawing



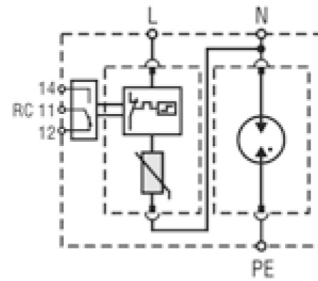
# Symbol/Connection



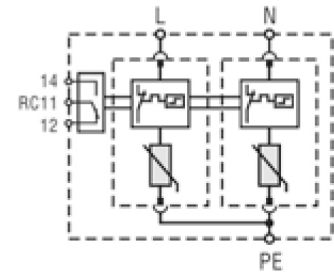
ETITEC CT2 G



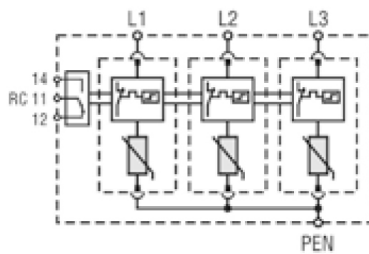
ETITEC CT2 1+0 RC



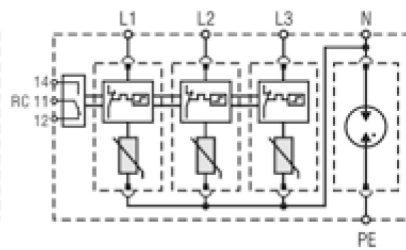
ETITEC CT2 1+1 RC



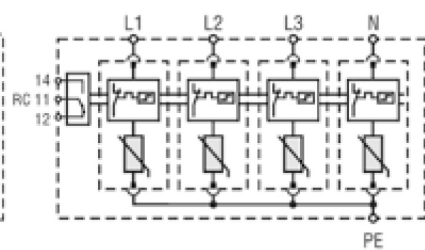
ETITEC CT2 2+0 RC



ETITEC CT2 3+0 RC



ETITEC CT2 3+1 RC



ETITEC CT2 4+0 RC